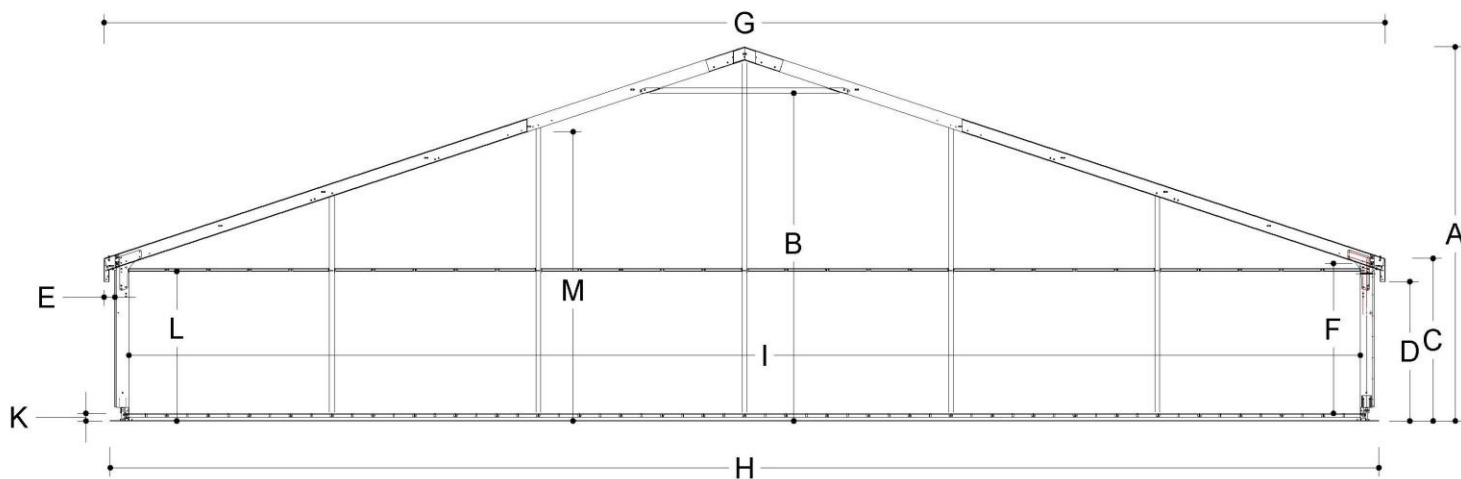




Alu hall

A30/400/5



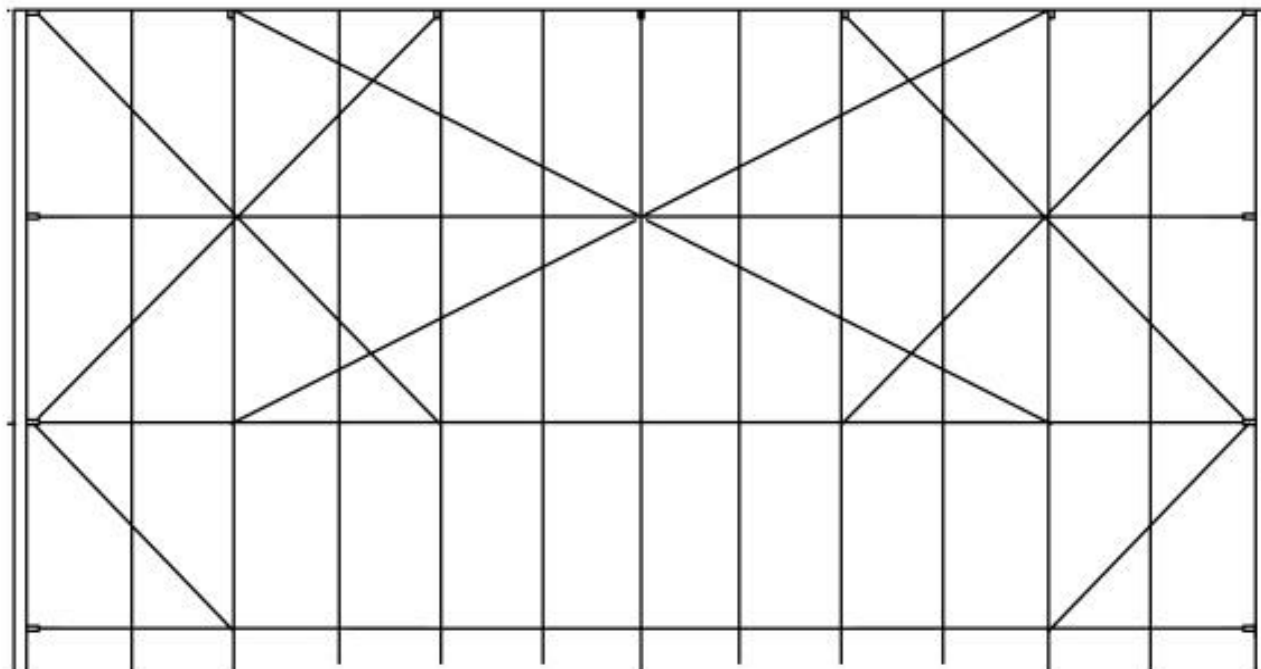
Technical data

| | (mm) | | | |
|---|--|-------|---|------------------------------|
| A | External ridge height | 9120 | Wind load | 0,50 kN/m ² |
| B | Internal free ridge height | 7649 | Snow load | 0 KN/m ² |
| C | External side height | 3870 | | |
| D | External free height | 3315 | Bearing capacity standard floor | 500kg/m ² |
| E | Roof overhang | 266 | | |
| F | Internal free side height | 3560 | Column profile | 120x300 |
| G | External width of the roof | 31060 | Maximum roof load | 400kg per rafterset |
| H | Maximum width ground level | 30790 | | |
| I | Internal width between columns | 29850 | Mounting points in structure | Columns and rafters |
| J | Bay distance | 5000 | | |
| K | Floorheight | 183 | Roof incline | 18° |
| L | Maximum headway ground to underside gable purlin | 3560 | | |
| M | Maximum headway with internal gable | 6700 | Standard fire resistance standard roof covers | DIN 4102/B1 M2 B-s2,d0 |



Alu hall

A30/400/5



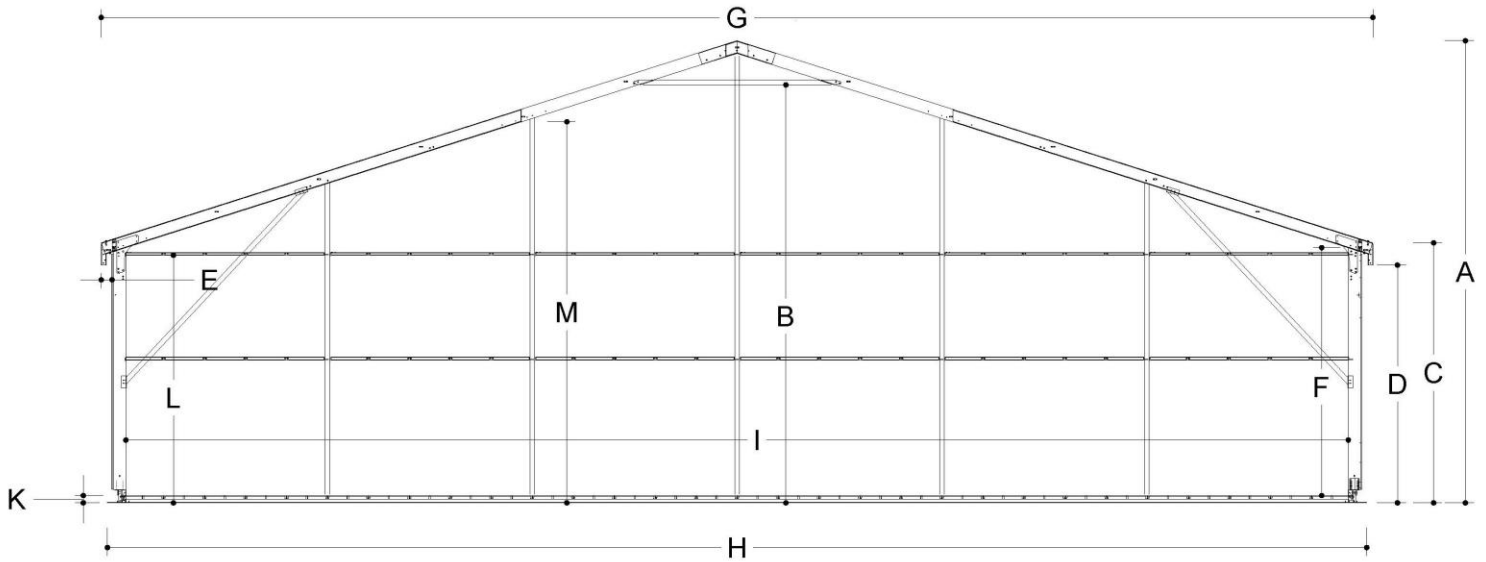
Options

| | | | |
|-----------------------|--|--|--|
| Available roof covers | White opaque roof cover Transparent roof cover | Available side curtains and side panels | PVC side curtains PVC side curtains with arched windows |
| Available floors | Cassette floor Plate floor Antiskid cassette floor | | Vertical PVC side panels Vertical glass side panels Sandwich side panels |
| Available doors | Aluminium push bar door 2m (blind) Aluminium push bar door 2m (glass) Emergency door | Roof insulation | No |
| | | Insulation side panels | No |
| | | Connection to permanent buildings | Yes |
| | | Connection to other Losberger De Boer structures | Yes |



Alu hall

A30/640/5



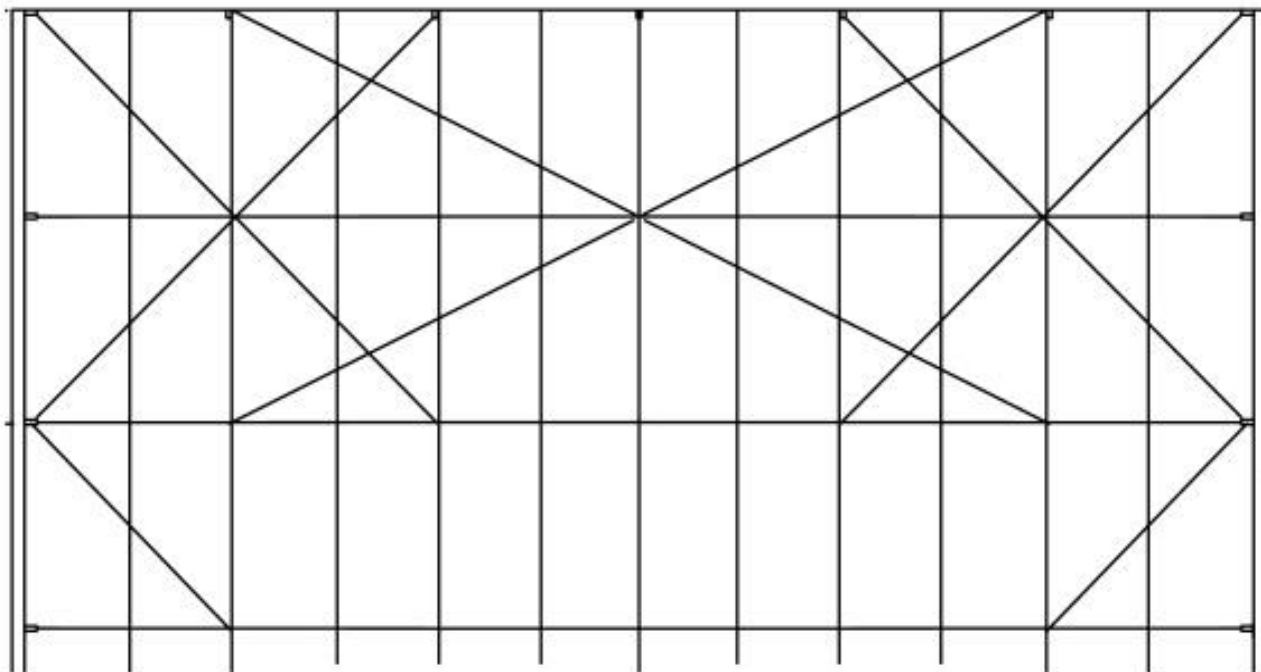
Technical data

| | (mm) | | | |
|---|--|-------|---|------------------------------|
| A | External ridge height | 11730 | Wind load | 0,50 kN/m ² |
| B | Internal free ridge height | 10259 | Snow load | 0 KN/m ² |
| C | External side height | 6480 | Bearing capacity standard floor | 500kg/m ² |
| D | External free height | 5925 | Column profile | 120x300 |
| E | Roof overhang | 266 | Maximum roof load | 400kg per rafterset |
| F | Internal free side height | 5260 | Mounting points in structure | Columns and rafters |
| G | External width of the roof | 31060 | Roof incline | 18° |
| H | Maximum width ground level | 30790 | Standard fire resistance standard roof covers | DIN 4102/B1 M2 B-s2,d0 |
| I | Internal width between columns | 29850 | | |
| J | Bay distance | 5000 | | |
| K | Floorheight | 183 | | |
| L | Maximum headway ground to underside gable purlin | 3560 | | |
| M | Maximum headway with internal gable | 9310 | | |



Alu hall

A30/640/5



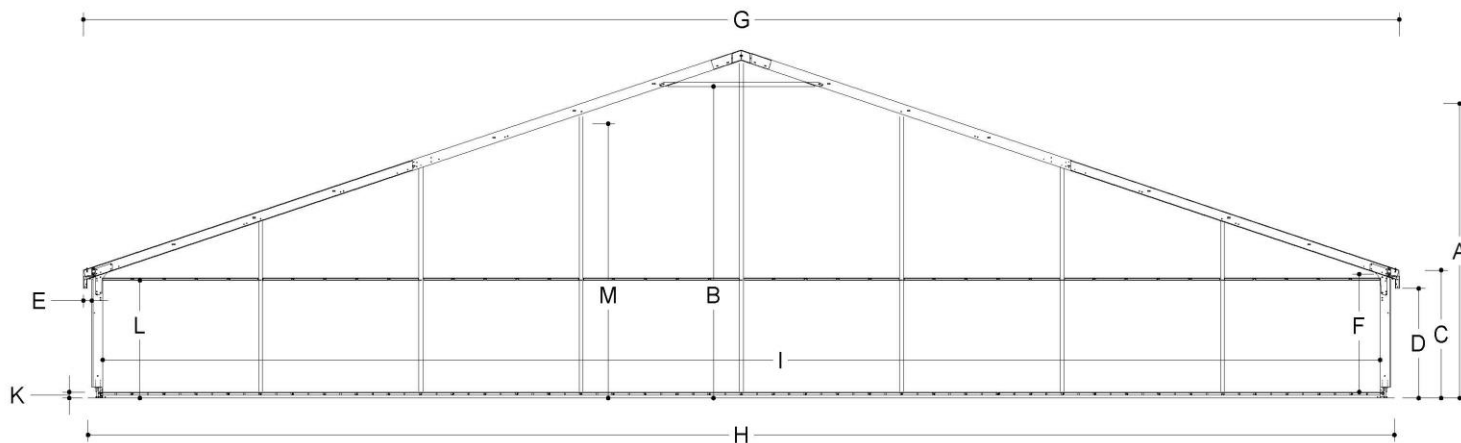
Options

| | | | |
|-----------------------|--|--|--|
| Available roof covers | White opaque roof cover Transparent roof cover | Available side curtains and side panels | PVC side curtains PVC side curtains with arched windows |
| Available floors | Cassette floor Plate floor Antiskid cassette floor | | Vertical PVC side panels Vertical glass side panels Sandwich side panels |
| Available doors | Aluminium push bar door 2m (blind) Aluminium push bar door 2m (glass) Emergency door | Roof insulation | Yes |
| | | Insulation side panels | No |
| | | Connection to permanent buildings | Yes |
| | | Connection to other Losberger De Boer structures | Yes |



Alu hall

A40/400/5



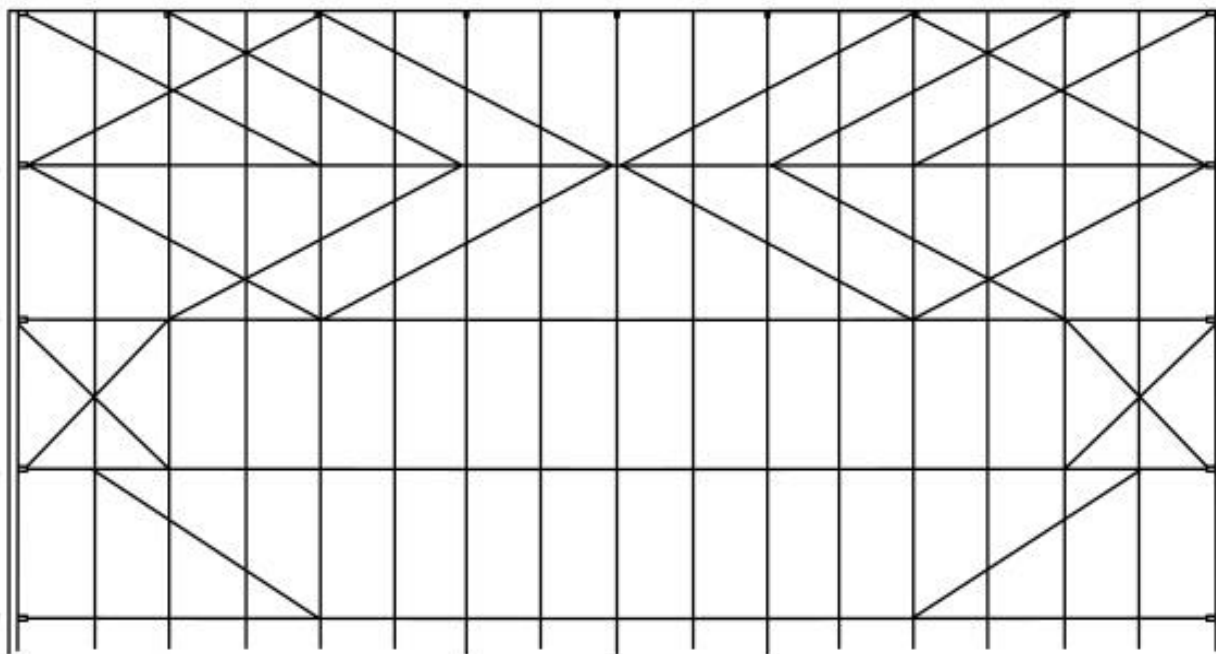
Technical data

| | (mm) | | | |
|----------|--|-------|---|------------------------------|
| A | External ridge height | 10375 | Wind load | 0,50 kN/m ² |
| B | Internal free ridge height | 8904 | Snow load | 0 KN/m ² |
| C | External side height | 3870 | Bearing capacity standard floor | 500kg/m ² |
| D | External free height | 3315 | Column profile | 120x300 |
| E | Roof overhang | 266 | Maximum roof load | 400kg per rafterset |
| F | Internal free side height | 3560 | Mounting points in structure | Columns and rafters |
| G | External width of the roof | 41060 | Roof incline | 18° |
| H | Maximum width ground level | 40790 | Standard fire resistance standard roof covers | DIN 4102/B1 M2 B-s2,d0 |
| I | Internal width between columns | 39850 | | |
| J | Bay distance | 5000 | | |
| K | Floorheight | 183 | | |
| L | Maximum headway ground to underside gable purlin | 3560 | | |
| M | Maximum headway with internal gable | 8260 | | |



Alu hall

A40/400/5



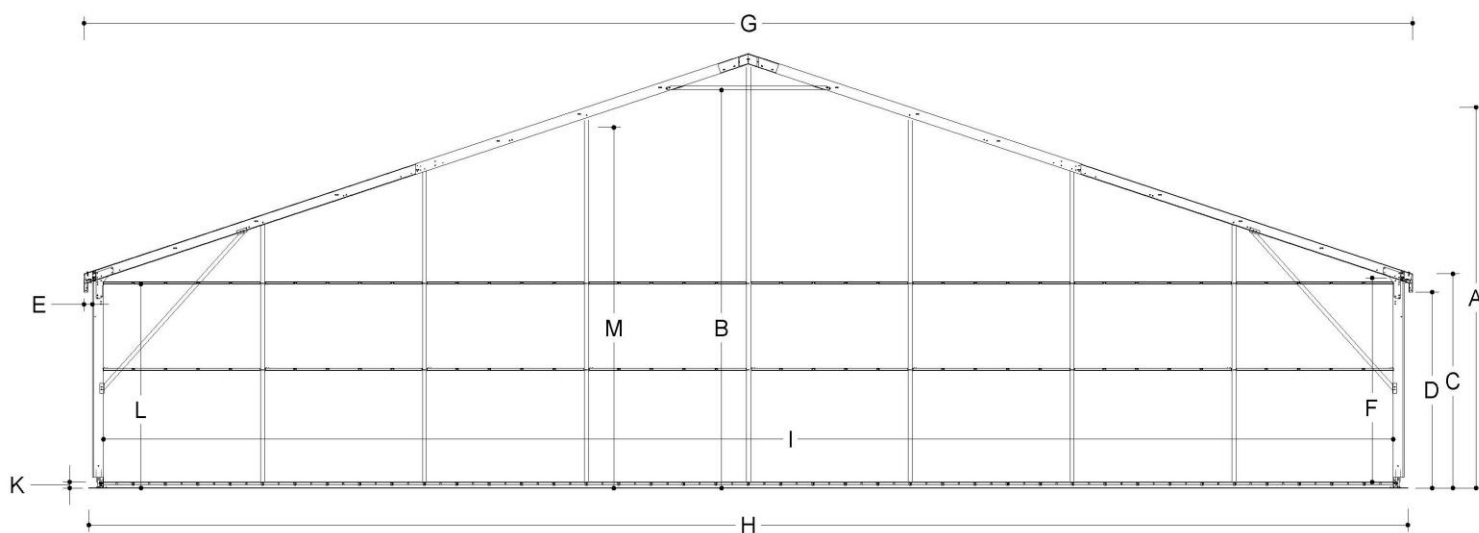
Options

| | | | |
|-----------------------|--|--|--|
| Available roof covers | White opaque roof cover Transparent roof cover | Available side curtains and side panels | PVC side curtains PVC side curtains with arched windows |
| Available floors | Cassette floor Plate floor Antiskid cassette floor | | Vertical PVC side panels Vertical glass side panels Sandwich side panels |
| Available doors | Aluminium push bar door 2m (blind) Aluminium push bar door 2m (glass) Emergency door | Roof insulation | No |
| | | Insulation side panels | No |
| | | Connection to permanent buildings | Yes |
| | | Connection to other Losberger De Boer structures | Yes |



Alu hall

A40/640/5



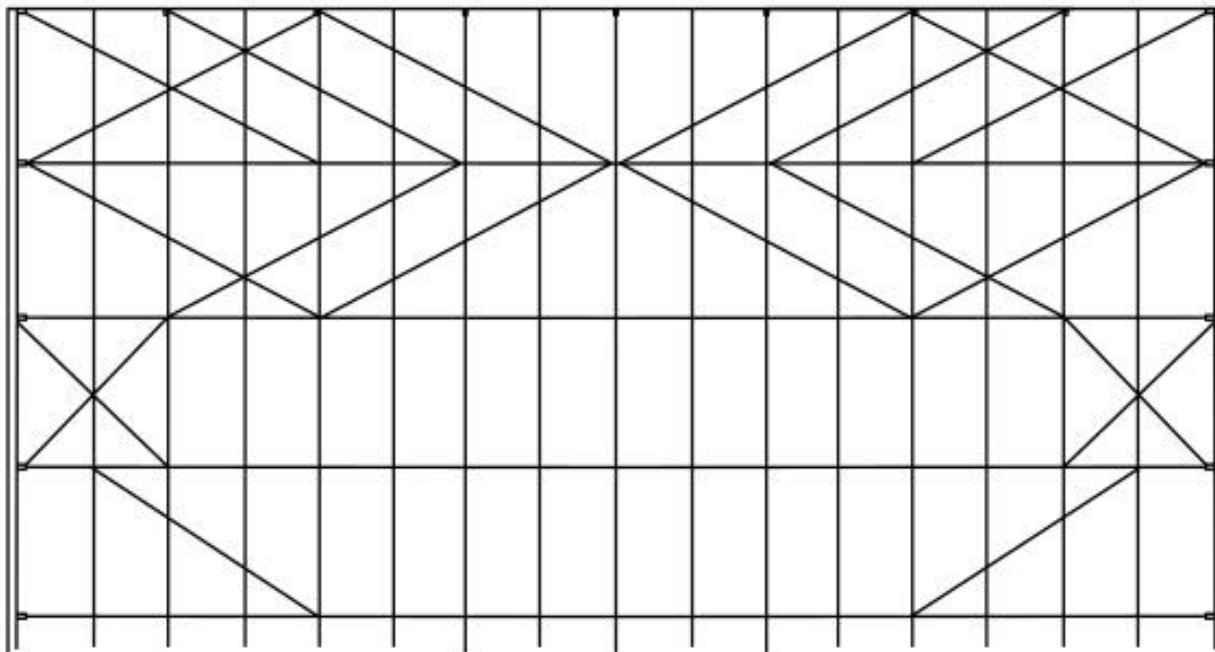
Technical data

| | (mm) | | | |
|---|--|-------|---|------------------------------|
| A | External ridge height | 12985 | Wind load | 0,50 kN/m ² |
| B | Internal free ridge height | 11514 | Snow load | 0 KN/m ² |
| C | External side height | 6480 | Bearing capacity standard floor | 500kg/m ² |
| D | External free height | 5925 | Column profile | 120x300 |
| E | Roof overhang | 266 | Maximum roof load | 400kg per rafterset |
| F | Internal free side height | 5260 | Mounting points in structure | Columns and rafters |
| G | External width of the roof | 41060 | Roof incline | 18° |
| H | Maximum width ground level | 40790 | Standard fire resistance standard roof covers | DIN 4102/B1 M2 B-s2,d0 |
| I | Internal width between columns | 39850 | | |
| J | Bay distance | 5000 | | |
| K | Floorheight | 183 | | |
| L | Maximum headway ground to underside gable purlin | 3560 | | |
| M | Maximum headway with internal gable | 10870 | | |



Alu hall

A40/640/5



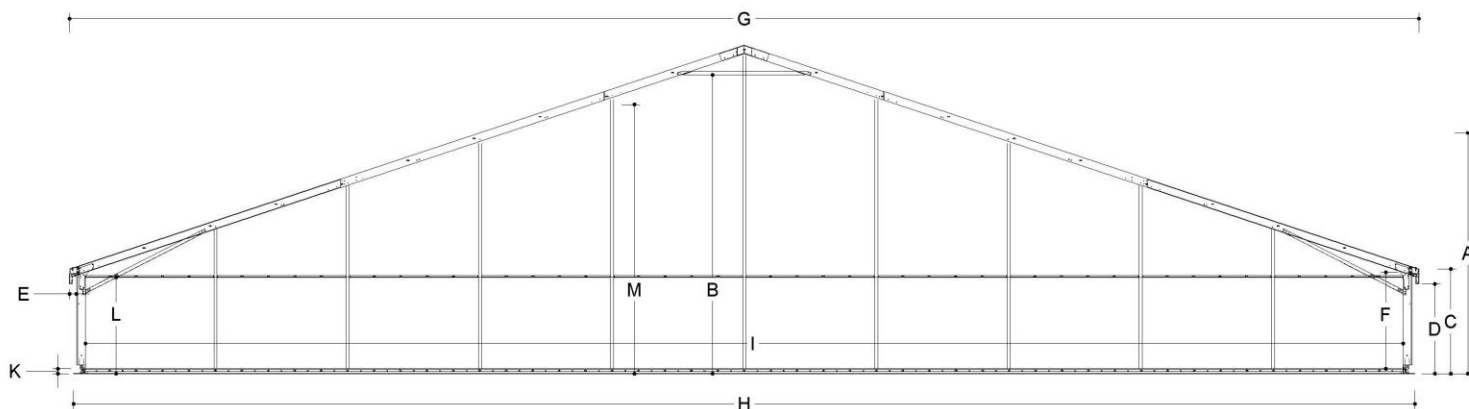
Options

| | | | |
|-----------------------|--|--|--|
| Available roof covers | White opaque roof cover Transparent roof cover | Available side curtains and side panels | PVC side curtains PVC side curtains with arched windows |
| Available floors | Cassette floor Plate floor Antiskid cassette floor | | Vertical PVC side panels Vertical glass side panels Sandwich side panels |
| Available doors | Aluminium push bar door 2m (blind) Aluminium push bar door 2m (glass) Emergency door | Roof insulation | Yes |
| | | Insulation side panels | No |
| | | Connection to permanent buildings | Yes |
| | | Connection to other Losberger De Boer structures | Yes |



Alu hall

A50/400/5



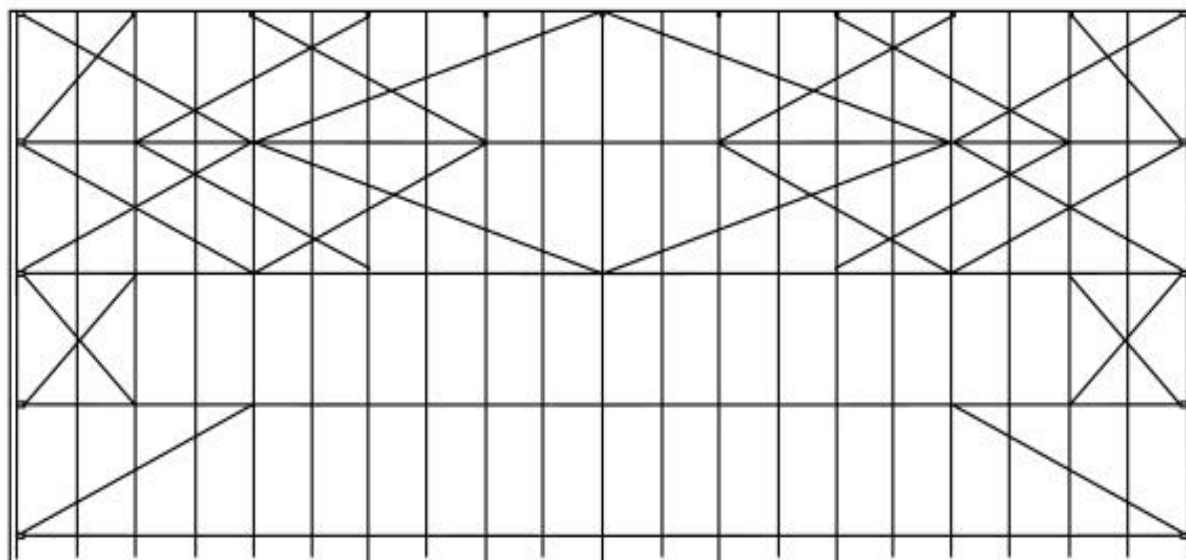
Technical data

| | (mm) | | | |
|---|--|-------|---|------------------------------|
| A | External ridge height | 12120 | Wind load | 0,50 kN/m ² |
| B | Internal free ridge height | 10500 | Snow load | 0 KN/m ² |
| C | External side height | 3870 | Bearing capacity standard floor | 500kg/m ² |
| D | External free height | 3315 | Column profile | 120x300 |
| E | Roof overhang | 266 | Maximum roof load | 400kg per rafterset |
| F | Internal free side height | 3560 | Mounting points in structure | Columns and rafters |
| G | External width of the roof | 51060 | Roof incline | 18° |
| H | Maximum width ground level | 50790 | Standard fire resistance standard roof covers | DIN 4102/B1 M2 B-s2,d0 |
| I | Internal width between columns | 49850 | | |
| J | Bay distance | 5000 | | |
| K | Floorheight | 183 | | |
| L | Maximum headway ground to underside gable purlin | 3560 | | |
| M | Maximum headway with internal gable | 9600 | | |



Alu hall

A50/400/5



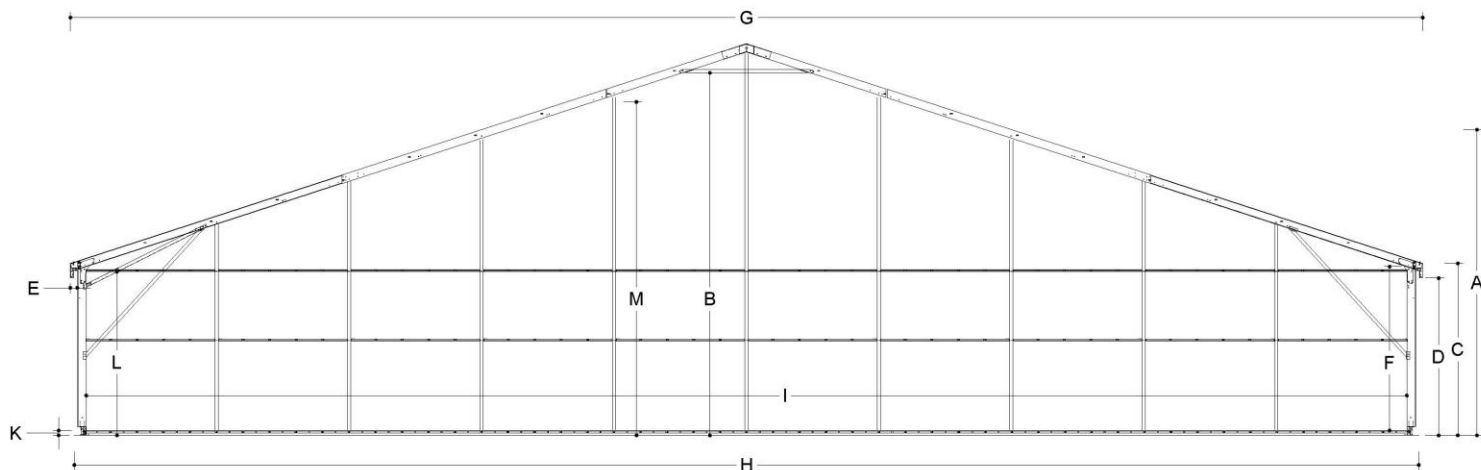
Options

| | | | |
|-----------------------|--|--|--|
| Available roof covers | White opaque roof cover Transparent roof cover | Available side curtains and side panels | PVC side curtains PVC side curtains with arched windows |
| Available floors | Cassette floor Plate floor Antiskid cassette floor | | Vertical PVC side panels Vertical glass side panels Sandwich side panels |
| Available doors | Aluminium push bar door 2m (blind) Aluminium push bar door 2m (glass) Emergency door | Roof insulation | No |
| | | Insulation side panels | No |
| | | Connection to permanent buildings | Yes |
| | | Connection to other Losberger De Boer structures | Yes |



Alu hall

A50/640/5



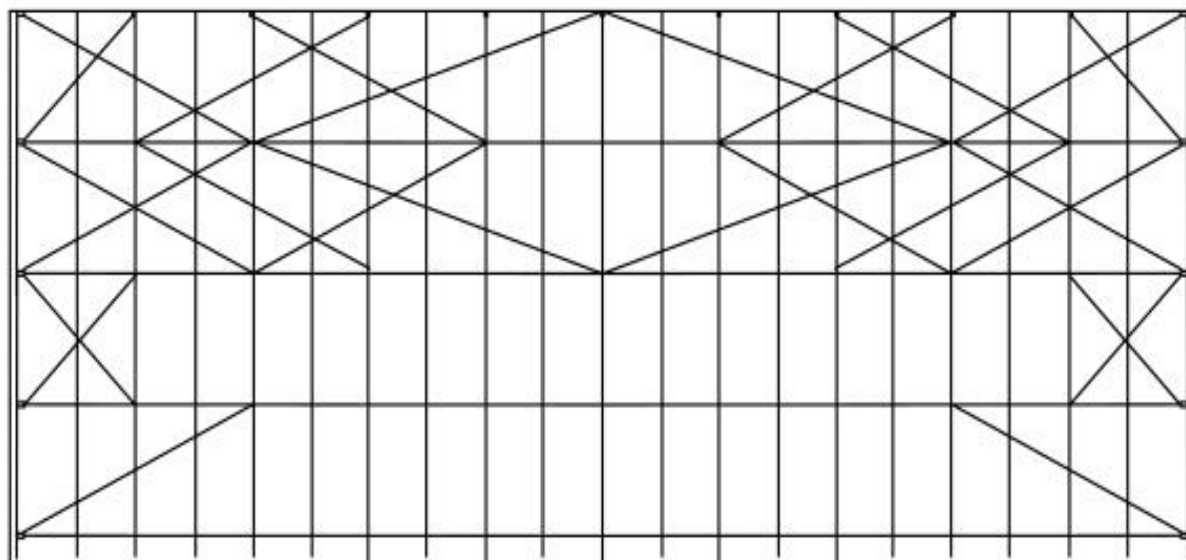
Technical data

| | (mm) | | | |
|---|--|-------|---|------------------------------|
| A | External ridge height | 14730 | Wind load | 0,50 kN/m ² |
| B | Internal free ridge height | 13110 | Snow load | 0 KN/m ² |
| C | External side height | 6480 | Bearing capacity standard floor | 500kg/m ² |
| D | External free height | 5925 | Column profile | 120x300 |
| E | Roof overhang | 266 | Maximum roof load | 400kg per rafterset |
| F | Internal free side height | 5260 | Mounting points in structure | Columns and rafters |
| G | External width of the roof | 51060 | Roof incline | 18° |
| H | Maximum width ground level | 50790 | Standard fire resistance standard roof covers | DIN 4102/B1 M2 B-s2,d0 |
| I | Internal width between columns | 49850 | | |
| J | Bay distance | 5000 | | |
| K | Floorheight | 183 | | |
| L | Maximum headway ground to underside gable purlin | 3560 | | |
| M | Maximum headway with internal gable | 12210 | | |



Alu hall

A50/640/5



Options

| | | | |
|-----------------------|--|--|--|
| Available roof covers | White opaque roof cover Transparent roof cover | Available side curtains and side panels | PVC side curtains PVC side curtains with arched windows |
| Available floors | Cassette floor Plate floor Antiskid cassette floor | | Vertical PVC side panels Vertical glass side panels Sandwich side panels |
| Available doors | Aluminium push bar door 2m (blind) Aluminium push bar door 2m (glass) Emergency door | Roof insulation | Yes |
| | | Insulation side panels | No |
| | | Connection to permanent buildings | Yes |
| | | Connection to other Losberger De Boer structures | Yes |