



LOSBERGER DE BOER



## Palas. Welcome to a new dimension. For exclusive presentations

Linear architecture, cubic forms and generous glazing. When you choose the new high-capacity Palas event and trade fair hall, you opt for elegance and atmosphere in a functional design. Visually appealing and spacious, Palas provides incredible design freedom. Both inside and out. The various facade structuring options make for uniquely contemporary architectural features.

Depending on need, wall elements made of hard-PVC or insulating glass can be selected. Thermo roof covers and thermo wall cassettes improve energy efficiency. And the Palas Emporium two-storey variant creates an optimal spatial experience.

Palas- experience events from a completely new perspective. Worldwide.



Emporium

# Palas



## The system's architectural components

Palas was developed based on the equipment level of Losberger De Boer P1 and P3N systems, making the most of Losberger De Boer's system compatibility. However, in the product range it is defined as a separate large tent system with special new features and characteristics. The basic tent shape is a slightly inclined saddle roof with only 7 degrees of roof slope and a surrounding 2.45 m roof parapet that serves as both an architectural element and a communication platform. Palas's advantage is its choice between horizontally and vertically installable wall elements for creating the facade, its lateral height of almost 8 metres (plus roof parapet), as well as

its range of variants. The truss beams can bear 1,000 kilos each, which plays a significant role in lighting and stage construction for events. Palas is especially suitable for high-capacity event and presentation halls, where the two-level Emporium variant can be installed. The Emporium cannot be compared to old-fashioned two-storey tents and has considerably more possibilities, such as a complete upper floor or gallery. With Palas's futuristic technology, premium quality and flexible capabilities, Losberger De Boer offers a mature large tent solution with a creative, utilitarian new spatial concept.



## Energy efficiency

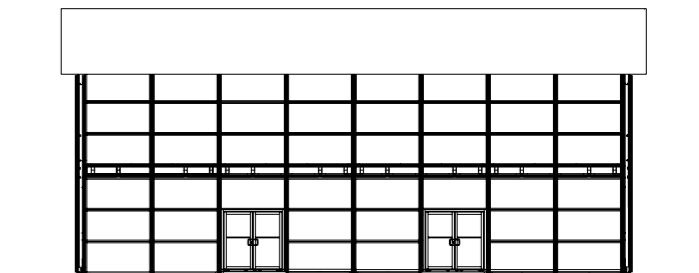
Palas is offered exclusively with thermo roof covers. The two-ply roof cladding is made with membrane technology, giving it greater thermal insulation properties through its pressure regulator controlled air cushion.

This prevents condensation on the underside of the roof cover. Horizontal window elements go all the way to the floor and use heat-insulating glass to offer maximum transparency and high energy efficiency. Moreover, new

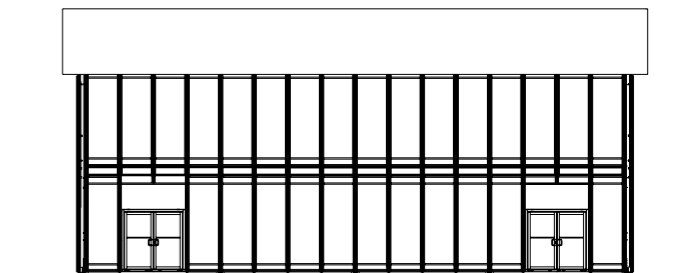
horizontal thermo wall cassettes with a filigree look provide better heat insulation properties. Depending on need, of course, traditional vertical wall elements from hard-PVC or glass can be chosen for the facade.



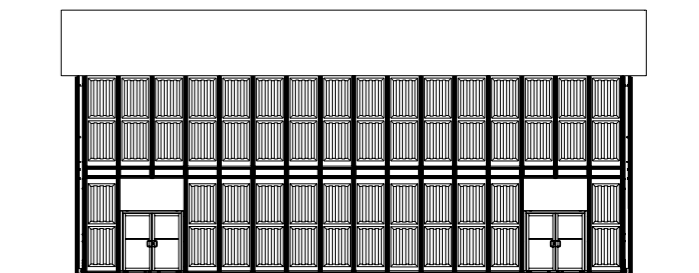
## Wall system elements, variants



■ Palas gable end with horizontal glass elements or thermo wall cassettes



■ Palas gable end with vertical glass elements



■ Palas gable end with vertical hard-PVC elements



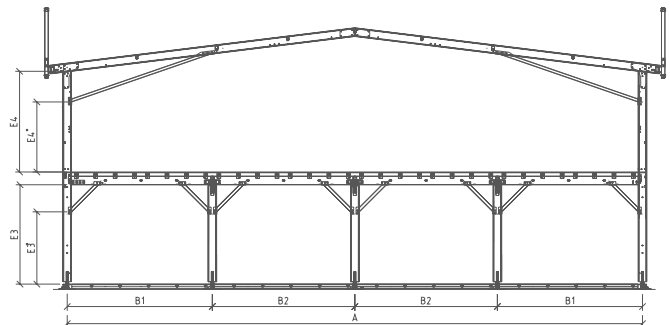
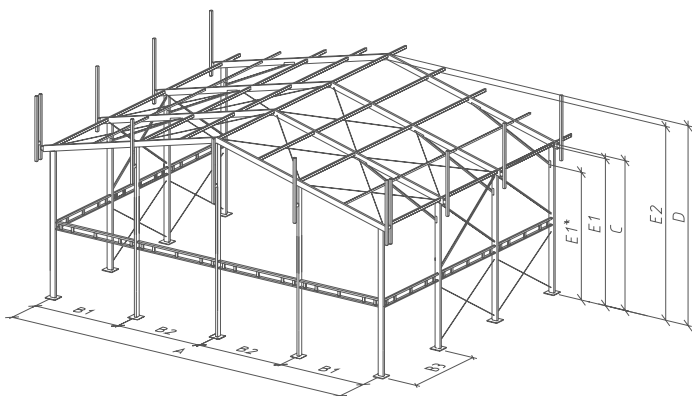
For special brand and advertising messages, Palas offers expansive design surfaces through an advanced wall system. This has been integrated into the existing Losberger De Boer tent system and requires no costly additional facade banners substructure. Using large banners, event organizers and companies can impressively customize their facades to match their own corporate design.

## Technical Information

Type/Dimension	Palas 10.5/800	Palas 15.5/800	Palas 20.5/800	Palas 25.5/800	Palas 30.5/800
Width A/clear width (m)	10.18/9.88	15.18/14.88	20.18/19.88	25.18/24.88	30.18/29.88
Eave height C (m)	7.80	7.80	7.80	7.80	7.80
Ridge height D (m)	8.56	8.86	9.17	9.48	9.79
Clear eave height E1/E1* (m)	7.46/6.39*	7.46/6.39*	7.46/6.38*	7.46/5.39*	7.46/5.40*
Clear ridge height E2 (m)	8.07	8.37	8.67	8.97	9.27
Clear height under mezzanine	3.48/2.53*	3.48/2.53*	3.48/2.53*	3.48/2.53*	3.48/2.53*
Clear height above mezzanine	3.53	3.53	3.53/2.46*	3.53/2.46*	3.53/2.46*
Height roof parapet (m)	2.45	2.45	2.45	2.45	2.45
Total height (m)	9.85	9.85	9.85	9.85	9.85
Roof slope	7°	7°	7°	7°	7°
Gable truss B1 (m)	5.09	5.09	5.09	5.09	5.09
Gable truss B2 (m)	5.00	5.00	5.00	5.00	5.00
Truss-distance B3 (m)	5.00	5.00	5.00	5.00	5.00
Longest component (m)	7.67	7.67	10.72	10.72	10.72
Truss profile (mm)	300 x 120	300 x 120	300 x 120	300 x 120	300 x 120
Min. assembly length (m)	10.00	15.00	20.00	25.00	30.00
Suspended load per truss (kg)	1.000	1.000	1.000	1.000	1.000

Ground anchoring: Steel anchor; max. assembly length: optional in longitudinal direction; snow load: none (available upon request); wind load per EN 13782; clear height from upper edge of ground floor to mezzanine floor, \* to the corner strut

## Example of Palas 20.5/800 with and without mezzanine



Losberger GmbH  
 Fürfeld · Gottlieb-Daimler-Ring 14  
 74906 Bad Rappenau · Germany  
 Phone: +49 7066 980-0  
 Fax: +49 7066 980-232  
 E-Mail: [export@losbergerdeboer.com](mailto:export@losbergerdeboer.com)  
[www.losbergerdeboer.com](http://www.losbergerdeboer.com)  
 Losberger De Boer Group